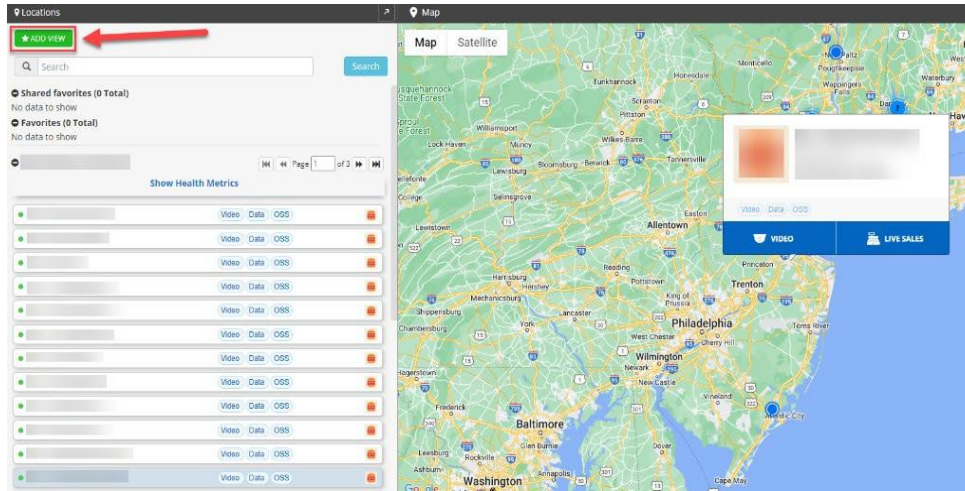


# Creating a Video Favorite Guide

The **Favorites** function enables you to set up cameras view from multiple locations in one window, allowing for easier monitoring of particular areas in your locations, such as back doors, offices, and lobbies.



To add a new favorite view, select the green **ADD VIEW** button. A new window will pop up. First, name the view, and then select the desired cameras using the **Location** search box. You can optionally add users to share the view with using the **Share to** box. Click the **CREATE** button to save the view.

✎ Add new favorites

View Name New favorite

Location



Expeditor( ...

Dining 360 ...

+2



Share to



Type to search

CANCEL

CREATE



To delete, share, or edit **Favorites**, simply click on the corresponding blue icons on the right-hand side of your **Favorite**.

★ ADD VIEW



Search

Search

Shared favorites (0 Total)

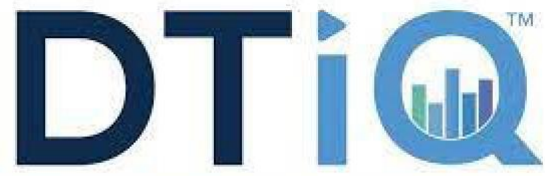
No data to show

Favorites (1 Total)

★ Back doors



For additional information or questions please contact [DTiQ Support](mailto:support@dtiq.com) at [support@dtiq.com](mailto:support@dtiq.com) or your [Customer Success Manager](mailto:csr@dtiq.com) at [csr@dtiq.com](mailto:csr@dtiq.com).



Smarter Locations. Superior Results.

800.933.8388 | [info@dtiq.com](mailto:info@dtiq.com) | [www.DTiQ.com](http://www.DTiQ.com)